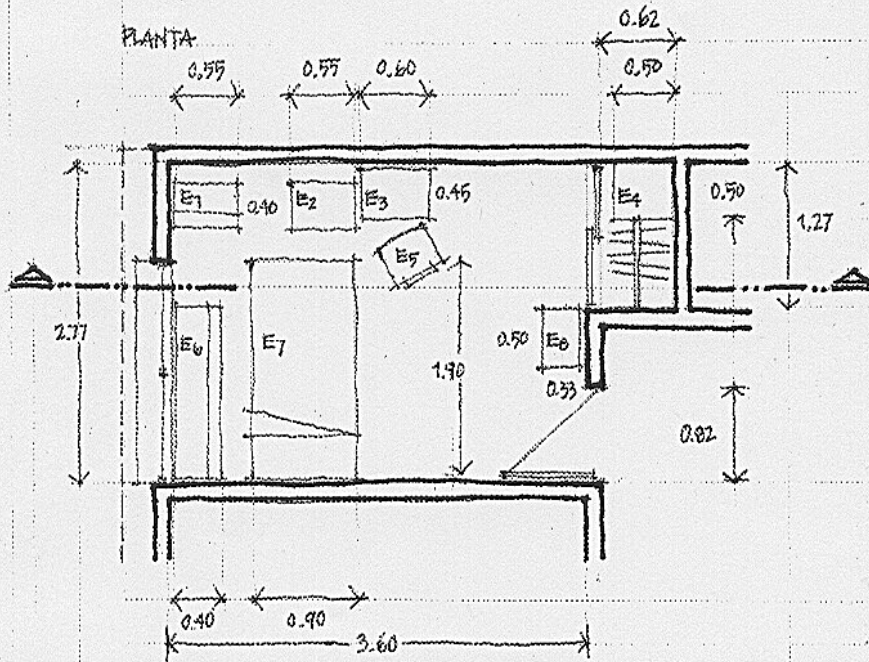


ESTADO ACTUAL

DORMITORIO



- | | # | X | Y | Z |
|----|---|---|---|---|
| E1 | | | | |
| E2 | | | | |
| E3 | | | | |
| E4 | | | | |
| E5 | | | | |
| E6 | | | | |
| E7 | | | | |
| E8 | | | | |
- E1. BUREO C/LÁMPARA
 - E2. CAJONERA
 - E3. MESA
 - E4. CAJONERA FIJA
 - E5. SILLA
 - E6. CAJONERA/LIBRERO
 - E7. CAMA INDIVIDUAL
 - E8. BANCO /ZAPATERO

ÁREA 10.76 M² VOLUMEN 24.75 M³

CORTE

